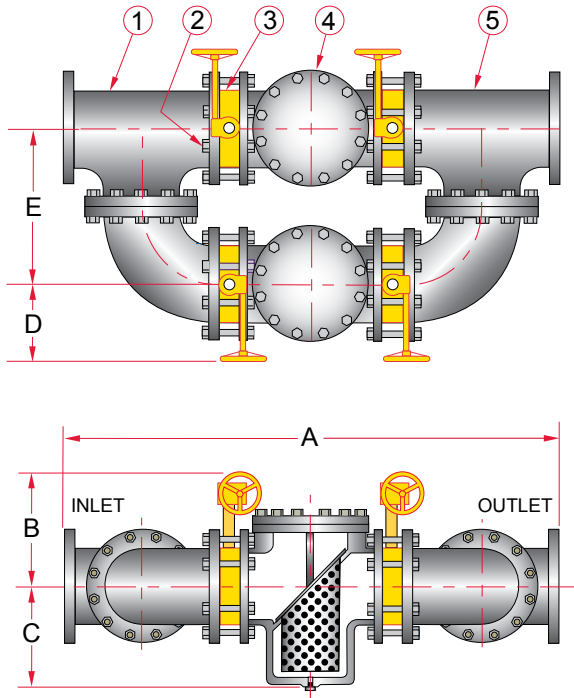


# Fabricated Dual Basket Strainers

## Type BDB - Bolted Dual Basket Strainer Cast Iron



Size		Dimensions (Inches)				
Inches	Prefix	A	B	C	D	E
2	0200	29 1/2	11	5	6	9 1/8
2 1/2	0250	31 7/8	11	5 3/8	6	10 1/8
3	0300	35 1/2	11	6 1/2	6	11 1/8
4	0400	41 5/8	11 7/8	8	6	13 1/8
5	0500	47 1/2	11 7/8	8	6 1/8	15 1/8
6	0600	52	11 11/16	8 5/8	6 1/8	16 1/8
8	0800	61	17 1/16	11 3/4	9	18 1/8
10	1000	70 3/4	10 1/2	13 3/4	11	22 1/8
12	1200	83	13 1/16	16 3/8	11	24 1/8
14	1400	96 1/2	15 11/16	22 3/8	11	28 1/8
16	1600	104 3/4	16 11/16	23 5/8	11	30 1/8
18	1800	123 3/4	27 7/16	28	11	33 1/8
20	2000	124	29 11/16	32	11	36 1/8
24	2400	141 3/4	32 7/8	32 3/8	11	44 1/8

Larger sizes are available.

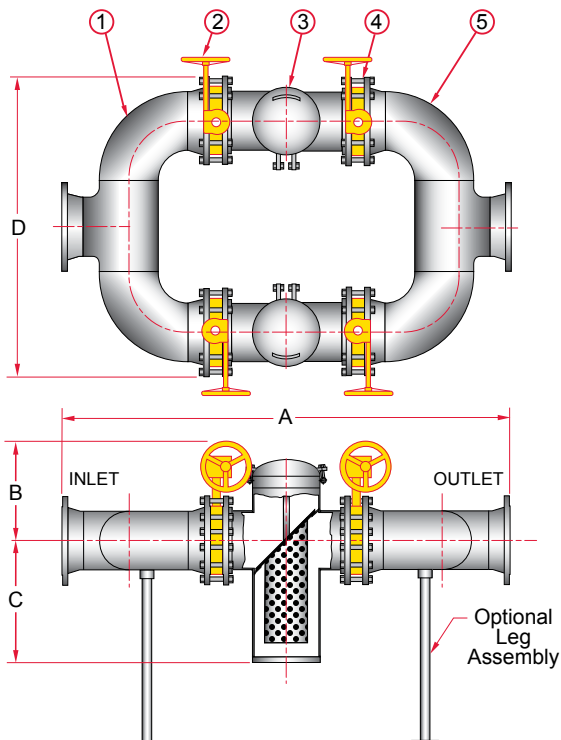
Construction	
Item	Description
1	Inlet Manifold
2	Bolting
3	Butterfly Valves
4	Strainers
5	Outlet Manifold

**Notes:**

Also available is our model BDBC125 with clamp covers. Consult factory for details.

Manufacturer reserves the right to modify dimensions, materials, or design. Consult factory for certification.

## Type DBH150 / DBH150SS - Fabricated Dual Basket Strainer Carbon Steel, Stainless Steel



Size		Dimensions (Inches)			
Inches	Prefix	A	B	C	D
2	0200	36 3/8	10 7/8	12 1/4	15
2 1/2	0250	40 5/8	11 3/8	12 3/4	18
3	0300	42 1/2	11 5/8	12 3/4	20 1/4
4	0400	48 3/8	12 3/8	14 5/16	25 1/4
6	0600	61 5/8	13 1/2	17 3/8	34 1/4
8	0800	72 3/4	17 3/4	21 5/8	43 1/2
10	1000	90 1/2	18 7/8	25 7/8	53
12	1200	103 1/8	20 1/2	28	63
14	1400	111 5/8	23 1/2	34 1/8	71
16	1600	126	29	36	79 1/2
18	1800	135 1/2	30	40 1/4	88
20	2000	145 3/4	32	45 1/8	97 1/2
24	2400	171 7/8	36	61 1/2	114

Larger sizes are available.

Construction	
Item	Description
1	Inlet Manifold
2	Butterfly Valves
3	Strainers
4	Check Valves
5	Outlet Manifold

**Notes:**

Manufacturer reserves the right to modify dimensions, materials, or design. Consult factory for certification.