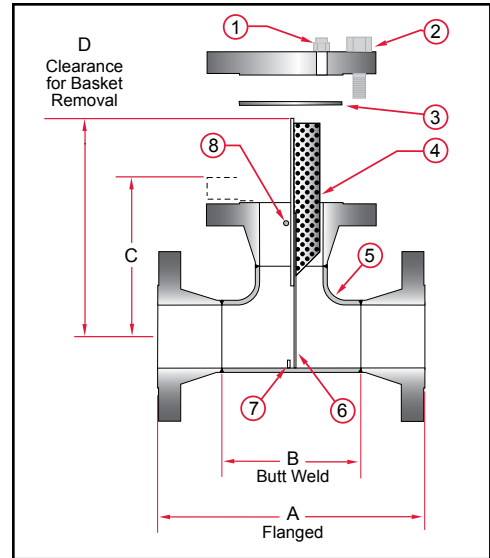


Fabricated Tee Strainers

TW150 / TW300 - Carbon Steel
TW150SS / TW300SS - Stainless Steel



Notes:

- Higher ASME pressure ratings available
- Larger sizes available

Manufacturer reserves the right to modify dimensions, materials, or design. Consult factory for certification.

| Construction | | | | | | | | |
|--------------|---------------|---------|--------|-----------------|---------------|-----------|--------------|-----------|
| Item | 1 | 2 | 3 | 4 | 5 | 6 | 7 | 8 |
| Description | Vent Assembly | Bolting | Gasket | Basket Assembly | Body Assembly | Body Ring | Screen Guide | Cross Bar |

| Dimensions (Inches) | | | | | | | | | |
|---------------------|--------|--------|--------|--------|--------|----------|---------|-----|-----|
| Size | | A | | B | | C | | D | |
| Inches | Prefix | 150 | 300 | 150 | 300 | 150 | 300 | 150 | 300 |
| 2 | 0200 | 10 | 10 1/2 | 5 | 5 | 5 7/8 | 6 1/4 | 13 | 13 |
| 2 1/2 | 0250 | 11 1/2 | 12 | 6 | 6 | 6 3/4 | 7 1/8 | 13 | 13 |
| 3 | 0300 | 12 1/4 | 13 | 6 3/4 | 6 3/4 | 7 3/16 | 7 3/4 | 14 | 14 |
| 4 | 0400 | 14 1/4 | 15 | 8 1/4 | 8 1/4 | 8 3/16 | 8 7/8 | 16 | 16 |
| 5 | 0500 | 16 3/4 | 17 1/2 | 9 3/4 | 9 3/4 | 9 7/16 | 10 1/4 | 19 | 19 |
| 6 | 0600 | 18 1/4 | 19 | 11 1/4 | 11 1/4 | 10 1/4 | 11 1/16 | 22 | 22 |
| 8 | 0800 | 22 | 22 3/4 | 14 | 14 | 12 1/4 | 13 1/8 | 25 | 25 |
| 10 | 1000 | 25 | 26 1/4 | 17 | 17 | 13 13/16 | 15 1/8 | 29 | 29 |
| 12 | 1200 | 29 | 30 1/4 | 20 | 20 | 15 7/8 | 17 1/4 | 31 | 31 |
| 14 | 1400 | 32 | 33 1/4 | 22 | 22 | 17 1/2 | 18 7/8 | 38 | 38 |
| 16 | 1600 | 34 | 35 1/2 | 24 | 24 | 18 9/16 | 20 1/8 | 41 | 41 |
| 18 | 1800 | 38 | 39 1/2 | 27 | 27 | 20 11/16 | 22 1/4 | 46 | 46 |
| 20 | 2000 | 41 3/8 | 42 3/4 | 30 | 30 | 22 9/16 | 24 | 51 | 51 |
| 24 | 2400 | 46 | 47 1/4 | 34 | 34 | 25 | 26 1/2 | 56 | 56 |

Ordering Information

Example: Include full description

Size Model Screen
 (Prefix) Number Opening
2400 TW300 125

24" Tee Strainer, Carbon Steel, Class 300 ASME Flanges, 1/8" Perf Screen.

| Operating Pressures and Temperatures | | | |
|--------------------------------------|----------|------------------|----------------|
| Type | Size | psi @ Temp Steam | psi @ Temp WOG |
| TW150 | 2" - 24" | 150 @ 366 °F | 285 @ 100 °F |
| TW150SS | 2" - 24" | 150 @ 366 °F | 275 @ 100 °F |
| TW300 | 2" - 24" | 300 @ 422 °F | 740 @ 100 °F |
| TW300SS | 2" - 24" | 300 @ 422 °F | 720 @ 100 °F |



Sureflow
 Equipment Inc.

Toll Free: 1-800-263-8251 Toll Free Fax: 1-800-876-1164
 International: 1-905-335-1350 International Fax: 1-905-332-4993
 Email: info@sureflowequipment.com www.sureflowequipment.com

