

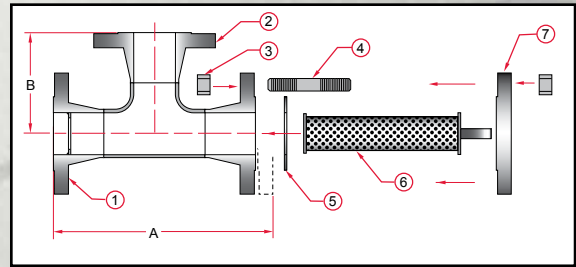
Fabricated Tee Strainers

TWA150 / TWA300 - Carbon Steel
TWA150SS / TWA300SS - Stainless Steel

Angled Flow Design



The Sure Flow TWA Strainer is similar to the standard Tee strainer except that it is designed for angled flow. The Strainer can



be fabricated with a standard bolted cover or a quick opening hinged cover (TWhA). The Sure Flow TWA Strainer can be fabricated to meet your specifications. The standard Strainer is constructed of Carbon or Stainless Steel material. Sure Flow also has vast experience in fabricating these strainers from Chrome-Moly material. Other materials, end connections and accessories are available.

Notes:

- Higher ASME pressure ratings available
- Larger sizes available

Manufacturer reserves the right to modify dimensions, materials, or design. Consult factory for certification.

Construction							
Item	1	2	3	4	5	6	7
Description	Inlet Flange	Outlet Flange	Hex Nuts	Studs	Gasket	Basket Assembly	Cover

Dimensions (Inches)					
Size		A		B	
Inches	Prefix	150	300	150	300
2	0200	10 7/8	11 1/2	5	5 1/4
2 1/2	0250	12 1/2	13 1/8	5 3/4	6
3	0300	13 5/16	14 1/4	6 1/8	6 1/2
4	0400	15 5/16	16 3/8	7 1/8	7 1/2
5	0500	17 13/16	19	8 3/8	8 3/4
6	0600	19 3/8	20 9/16	9 1/8	9 1/2
8	0800	23 1/4	24 1/2	11	11 3/8
10	1000	26 5/16	28 1/4	12 1/2	13 1/8
12	1200	30 3/8	32 3/8	14 1/2	15 1/8
14	1400	33 1/2	35 1/2	16	16 5/8
16	1600	35 9/16	37 7/8	17	17 3/4
18	1800	39 11/16	42	19	19 3/4
20	2000	43 3/16	45 3/8	20 3/4	21 3/8
24	2400	48	50 1/8	23	23 5/8

Ordering Information

Example: Include full description

Size Model Screen
 (Prefix) Number Opening
1000 TWA150 125

10" Tee Strainer, Carbon Steel, Class 150 ASME Flanges, 1/8" Perf Screen.

Operating Pressures and Temperatures			
Type	Size	psi @ Temp Steam	psi @ Temp WOG
TWA150	2" - 24"	150 @ 366 °F	285 @ 100 °F
TWA150SS	2" - 24"	150 @ 366 °F	275 @ 100 °F
TWA300	2" - 24"	300 @ 422 °F	740 @ 100 °F
TWA300SS	2" - 24"	300 @ 422 °F	720 @ 100 °F



Sure Flow
Equipment Inc.

Toll Free: 1-800-263-8251 Toll Free Fax: 1-800-876-1164
 International: 1-905-335-1350 International Fax: 1-905-332-4993
 Email: info@sureflowequipment.com www.sureflowequipment.com