

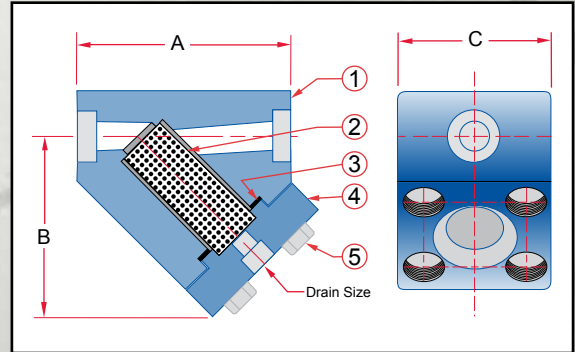
High Pressure Y Strainers

YBC2500 / YBC2500SS - Carbon Steel / Stainless Steel

Socket Weld or NPT Threaded End Connections



The high strength forged carbon steel or stainless steel construction is designed for higher pressure applications. If all stainless steel construction is needed, add "SS" to the model number. Stainless steel spiral wound gasket is standard.



Notes:

- Higher ASME pressure ratings available
- Larger sizes available
- Unit is Standard with no drain

Manufacturer reserves the right to modify dimensions, materials, or design. Consult factory for certification.

| Construction | | | | | |
|--------------|------|--------|--------|-------|---------|
| Item | 1 | 2 | 3 | 4 | 5 |
| Description | Body | Screen | Gasket | Cover | Bolting |

| Dimensions (Inches) | | | | | | |
|---------------------|--------|----------|---------|--------|----------------|-----------------------|
| Size | | A | B | C | Blow-Off Drain | Shipping Weight (LBS) |
| Inches | Prefix | | | | | |
| 1/2 | 0050 | 5 1/2 | 4 7/8 | 4 3/8 | optional | 124 |
| 3/4 | 0075 | 6 | 5 1/2 | 4 3/4 | optional | 124 |
| 1 | 0100 | 7 1/4 | 6 7/8 | 5 1/8 | optional | 124 |
| 1 1/4 | 0125 | 7 3/4 | 7 11/16 | 5 1/8 | optional | 140 |
| 1 1/2 | 0150 | 8 3/8 | 7 3/4 | 6 | optional | 140 |
| 2 | 0200 | 9 1/4 | 9 1/16 | 6 3/4 | optional | 140 |
| 2 1/2 | 0250 | 11 | 10 1/8 | 7 3/4 | optional | 190 |
| 3 | 0300 | 14 11/16 | 12 5/16 | 10 1/2 | optional | 190 |

Ordering Information

Example: Include full description

Size Model Screen
(Prefix) Number Opening
0150 YBC2500 045

1 1/2" High Pressure Y Strainer, Carbon Steel, ASME Class 2500, 3/64" Perf Screen

| Operating Pressures and Temperatures | | |
|--------------------------------------|-----------|----------------|
| Type | Size | psi @ Temp WOG |
| YBC2500 | 1/2" - 3" | 6170 @ 100 °F |
| YBC2500SS | 1/2" - 3" | 6000 @ 100 °F |

| Standard Screens | | |
|------------------|------------|---------|
| Size | Standard | Opening |
| 1/2" - 3" | 3/64" perf | 0.045" |



**Sure Flow
Equipment Inc.**

Toll Free: 1-800-263-8251 Toll Free Fax: 1-800-876-1164
International: 1-905-335-1350 International Fax: 1-905-332-4993
Email: info@sureflowequipment.com www.sureflowequipment.com