

# Duplex Strainers

## Options

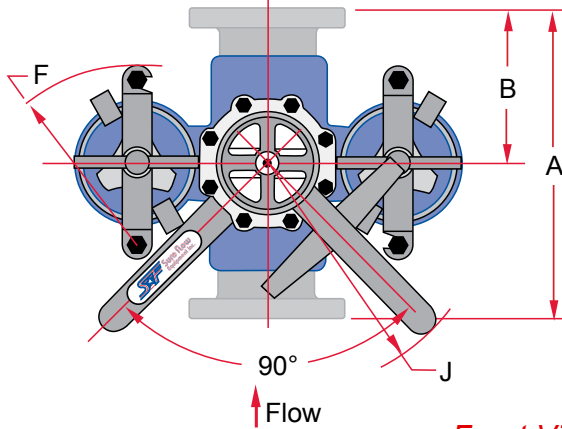
- ▲ Ductile iron construction
- ▲ Basket perforations from 1/32" to 1/2"
- ▲ Basket mesh from 10 to 400
- ▲ Monel baskets
- ▲ Viton®, PTFE, or EPDM seals
- ▲ Vent valves
- ▲ Drain valves
- ▲ 1/4" NPT taps
- ▲ Magnetic basket inserts
- ▲ Pressure differential gauge and switch connections
- ▲ Steam jacket

## Dimensional Data (Inches)

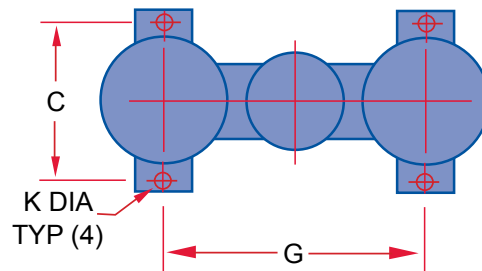
Size		A	B	C	D	E	F	G	H	J	K	L	Shipping Weight (lbs.)			
Inches	Prefix												Cast Iron	Bronze	Carbon Steel	Stainless Steel
5	0500	18 3/8	9	9 3/4	33 1/4	14 3/4	10 1/4	17 3/16	3/8	19 3/4	9/16	41	463	473	-	-
6	0600	22	12 7/8	12 1/2	36 1/4	19 1/2	11 3/4	20 3/4	3/8	19 3/4	5/8	42	575	699	690	738
8	0800	25	14	17	50 5/8	23 1/16	-	30 3/4	1/2	28	15/16	56	1725	2070	1851	1920

Dimensions and weights are for reference only. Please contact Sure Flow Equipment Inc. for certified drawings.

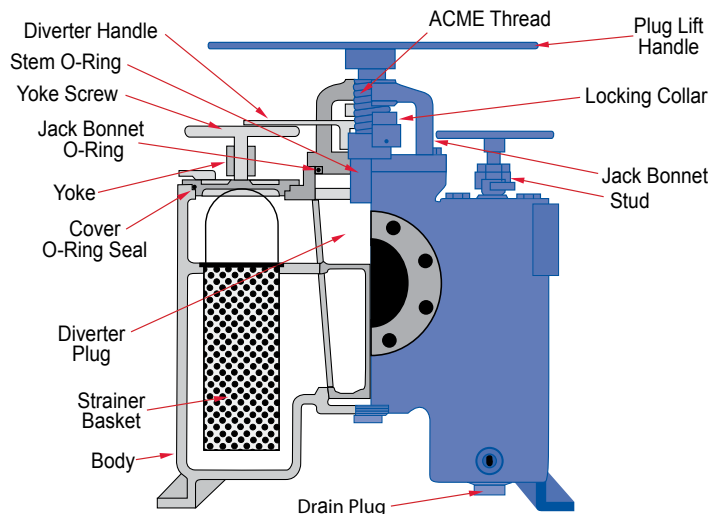
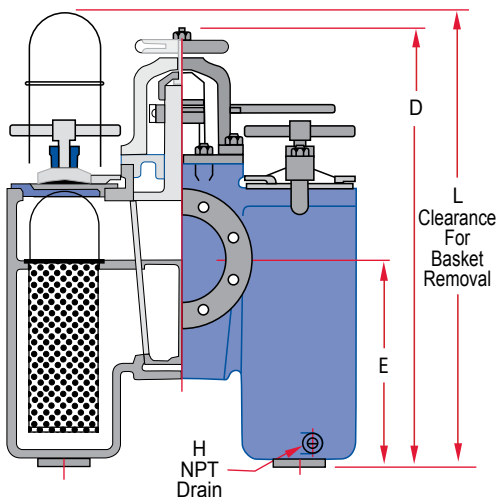
Top View



Mounting Layout



Front View: Flanged - 5" to 8"



Sure flow  
Equipment Inc.

Toll Free: 1-800-263-8251 Toll Free Fax: 1-800-876-1164  
International: 1-905-335-1350 International Fax: 1-905-332-4993  
Email: info@sureflowequipment.com www.sureflowequipment.com

