

Production Capabilities and Engineering Expertise

Head Office and Production Facility

- 100,000 Square foot facility
- Central distribution centre
- All finished products
- Complete machine shop, lathe, vertical and horizontal boring
- 12 Welding stations with Jib cranes
- Fully equipped with overhead cranes
- 40 Foot drive in dock, dock height door and service door
- 20 Foot paint booth

Welding Capabilities

- MIG (GMAW)
- TIG (GTAW)
- Submerged Arc Welding (SAW)
- Flux-Core (FCAW)
- Stick Electrode (SMAW)

Additional Services

- Heat Tracing and Treatment
- Full Material Traceability
- Stress Relieving
- Oxygen Service Cleaning and Degreasing
- Machining
- Steel Painting includes Tank Linings, Protective Coatings, Chemical Corrosion Resistance
- Sand Blasting
- Plasma Cutting
- Water Jet Cutting (Carbon Steel, Stainless Steel and Aluminum thickness up to 1")
- Contour Beveling

Testing

- RT, UT, MT, LP
- Film Thickness Testing
- Adhesion Testing
- Holiday Testing
- Hydrostatic, Pneumatic
- Hardness Testing
- PMI Positive Material Identification
- Non-Destructive Testing
- Automated Marking System

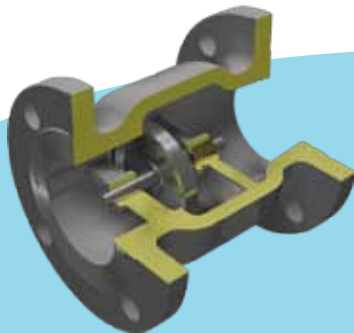
To provide you with the most elite Strainer, Check Valve, Butterfly Valve, and a variety of other industrial valves, Sure Flow uses an in-house handheld PMI Positive Material Identification Analyzer. Within five seconds we can provide a full traceability of any alloy; plus download the analysis to provide a Material Test Report (MTR).

We can readily supply in-house Material Test Reports for castings, welding rod, wire and all piping components, etc., to validate material composition.



Engineering Expertise

- Full in-house design, Engineering Department
- CAD services to design and build specialty products
- CFD Computational Fluid Dynamics software program
- 3D Product Models



3D Computerized Product Models

This capability enables our Sure Flow Engineering Department to provide a better illustration of the installation, flow and positioning of our custom engineered products.



**Sure Flow
Equipment Inc.**

Toll Free: 1-800-263-8251 Toll Free Fax: 1-800-876-1164
International: 1-905-335-1350 International Fax: 1-905-332-4993
Email: info@sureflowequipment.com www.sureflowequipment.com

