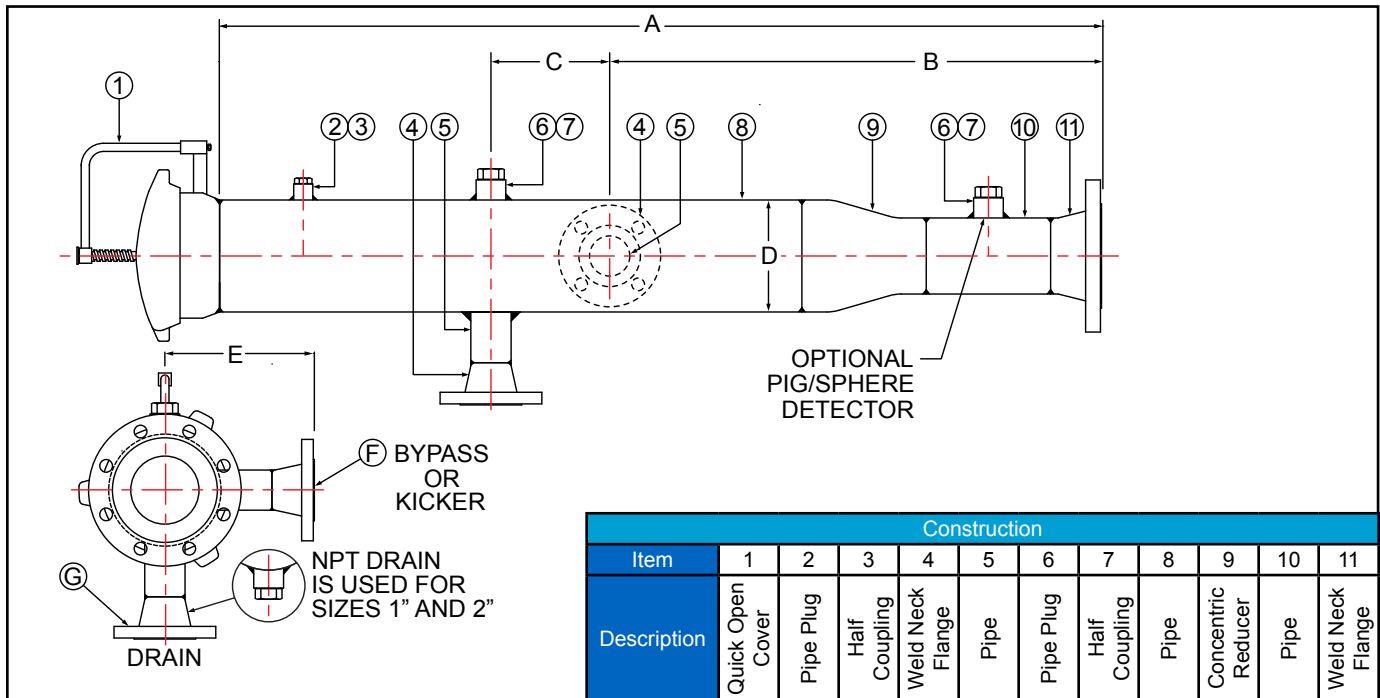


Dimensions - Receivers

RCR150 / RCR300 / RCR600 - Carbon Steel
RCR150SS / RCR300SS / RCR600SS - Stainless Steel

ASME Class 150 / 300 / 600 - Flanged Connections



Notes:

- Higher ASME pressure ratings available
 - Larger sizes available
- Manufacturer reserves the right to modify dimensions, materials, or design. Consult factory for certification.

Dimensions (Inches)								
Run Size	Prefix	A	B	C	D	E	F	G
4	0400	62	29	7	6 5/8	11	2	1
6	0600	66	31	8	8 5/8	12	3	2
8	0800	74	34	9	10 3/4	13	4	2
10	1000	82	36	10	12 3/4	14	4	2
12	1200	90	38	11	16	16	6	4
14	1400	112	45	12	16	16	6	4
16	1600	114	50	14	18	17	8	4
18	1800	120	55	16	20	20	10	6
20	2000	124	58	18	24	21	10	6
24	2400	130	60	18	26	23	10	6
26	2600	138	64	18	28	24	10	6
28	2800	148	68	20	30	26	12	6
30	3000	160	74	22	36	28	12	8
36	3600	172	80	24	40	32	14	8

Ordering Information

Example: Include full description

Size Model
(Prefix) Number

1200 RCR300SS

12" Receiver, ASME Class 300, Stainless Steel

Operating Pressures and Temperatures

Type	Size	psi @ Temp Steam	psi @ Temp WOG
RCR150	4" - 36"	150 @ 366 °F	285 @ 100 °F
RCR150SS			275 @ 100 °F
RCR300	4" - 36"	300 @ 422 °F	740 @ 100 °F
RCR300SS			720 @ 100 °F
RCR600	4" - 36"	600 @ 489 °F	1480 @ 100 °F
RCR600SS			1440 @ 100 °F



**Sure Flow
Equipment Inc.**

Toll Free: 1-800-263-8251 Toll Free Fax: 1-800-876-1164
International: 1-905-335-1350 International Fax: 1-905-332-4993
Email: info@sureflowequipment.com www.sureflowequipment.com

