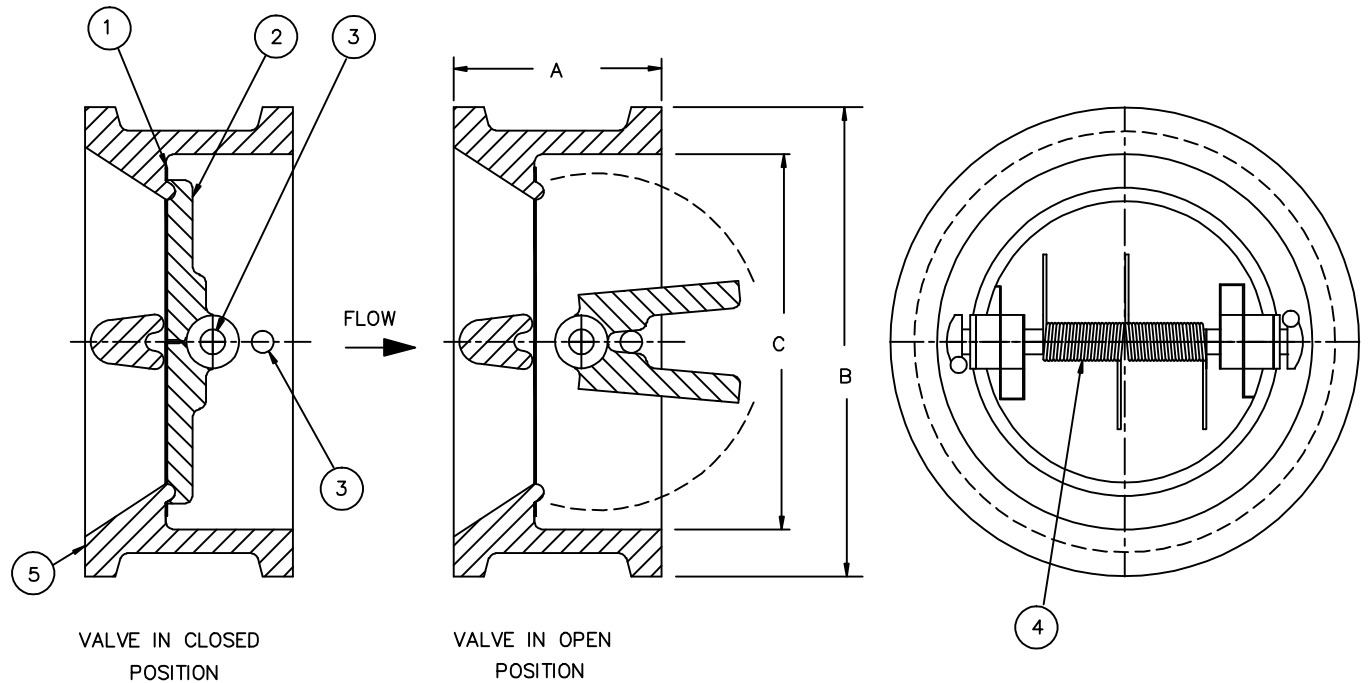


DIMENSIONS (INCH)				
SIZE	A	B	C	WEIGHT (LBS)
2	2 3/8	4 3/8	2 3/8	6
3	2 7/8	5 7/8	3 3/4	12
4	3 1/8	7 5/8	4 1/2	23
6	5 3/8	10 1/2	6 5/8	58
8	6 1/2	12 5/8	8 5/8	105
10	8 3/8	15 3/4	10 3/4	267
12	9	18	12 5/8	-
14	10 3/4	19 3/8	13 3/4	-
16	12	22 1/4	16 11/16	-
18	14 1/4	24 1/8	18	-
20	14 1/2	26 7/8	20 1/4	-
24	17 1/4	31 1/8	23 3/4	-
26	18	34 1/8	24 3/4	-
28	19	36	27 5/8	-
30	19 7/8	38 1/4	30 1/8	-
32	21	40 1/4	30 13/16	-

PARTS LIST			
ITEM	DESCRIPTION	SPECIFICATIONS	QTY
1	SEAT/SEAL	VITON/METAL	1
2	DISC	SA351 CF8M	2
3	SHAFT	316 STAINLESS STEEL	2
4	TORSION SPRING	INCONEL	2
5	CAST BODY	SA216 WCB	1



FOR APPROVAL OR QUOTATION PURPOSE ONLY

A	SEAT/SEAL MATERIAL WAS VITON/316 SS	09-26-08
REF	REVISIONS	DATE

SURE FLOW EQUIPMENT INC.
 This drawing is the property of Sure Flow Equipment Inc. It shall not be copied or duplicated in any manner and shall not be submitted to outside parties for examination without the written consent of Sure Flow Equipment Inc. It shall be used for reference to work under contract, or for proposals submitted by Sure Flow Equipment Inc. only.



Model	2" - 32" FE600 CHECK VALVES		
Drawn	G. VENTURELLI	Approved	Scale NTS
Date	AUG.26/04	Drawing Number	Q01191 Rev A