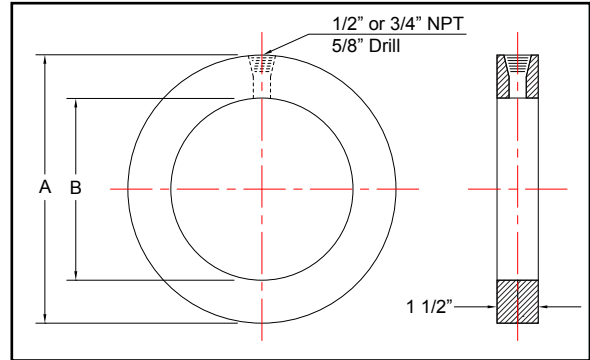


# Bleed Rings / Flushing Rings

BLEED150 / BLEED150SS • BLEED300 / BLEED300SS • BLEED600/BLEED600SS

ASME Class 150 / 300 / 600 - Carbon Steel & Stainless Steel



- Sure Flow Equipment Bleed Rings and Flushing Rings are designed to withstand any pressure - temperature combination that an ASME flange will withstand.
- 1/2" or 3/4", threaded or socket-weld taps are standard. Multiple taps can be provided but must be orientated by customer. Thickness of ring may be affected if larger taps are required.
- One coat of standard shop primer will be applied to all carbon steel rings unless specified differently.
- Standard materials are: SA516 Gr.70 • 304 Stainless Steel • 316 Stainless Steel  
Other alloys can be furnished upon request
- Sure Flow Equipment Bleed Rings and Flushing Rings are produced in strict accordance with the following codes of practice: ASME B16.5 • ASME B16.20 • ASME B16.47 (For larger diameter flanges)

**Notes:**

- Standard with 125-250 AARH Serrated Finish
- Higher ASME pressure ratings available
- Larger sizes available
- Manufacturer reserves the right to modify dimensions, materials, or design. Consult factory for certification.

Dimensions (Inches)					
Size		B	"A" Dimension		
Inches	Prefix		Class 150	Class 300	Class 600
1	0100	1 5/16	2 1/2	2 3/4	2 3/4
1 1/2	0150	1 7/8	3 1/4	3 5/8	3 5/8
2	0200	2 3/8	4	4 1/4	4 1/4
3	0300	3 1/2	5 1/4	5 3/4	5 3/4
4	0400	4 1/2	6 3/4	7	7 1/2
6	0600	6 5/8	8 5/8	9 3/4	10 3/8
8	0800	8 5/8	10 7/8	12	12 1/2
10	1000	10 3/4	13 1/4	14 1/8	15 5/8
12	1200	12 3/4	16	16 1/2	17 3/4
14	1400	14	17 5/8	19	19 1/8
16	1600	16	20 1/8	21 1/8	22
18	1800	18	21 1/2	23 3/8	23 7/8
20	2000	20	23 3/4	25 5/8	26 5/8
24	2400	24	28 1/8	30 3/8	30 7/8

## Ordering Information

Example: Include full description

Size                      Model  
(Prefix)                  Number  
**2400                      BLEED150SS**

24" Bleed Ring, ASME Class 150, Stainless Steel

## Operating Pressures and Temperatures

Type	Size	psi @ Temp Steam	psi @ Temp WOG
BLEED150	1" - 24"	150 @ 366 °F	285 @ 100 °F
BLEED150SS	1" - 24"	150 @ 366 °F	275 @ 100 °F
BLEED300	1" - 24"	300 @ 422 °F	740 @ 100 °F
BLEED300SS	1" - 24"	300 @ 422 °F	720 @ 100 °F
BLEED600	1" - 24"	600 @ 489 °F	1480 @ 100 °F
BLEED600SS	1" - 24"	600 @ 489 °F	1440 @ 100 °F



**Sure flow**  
Equipment Inc.

Toll Free: 1-800-263-8251 Toll Free Fax: 1-800-876-1164  
International: 1-905-335-1350 International Fax: 1-905-332-4993  
Email: info@sureflowequipment.com www.sureflowequipment.com

