

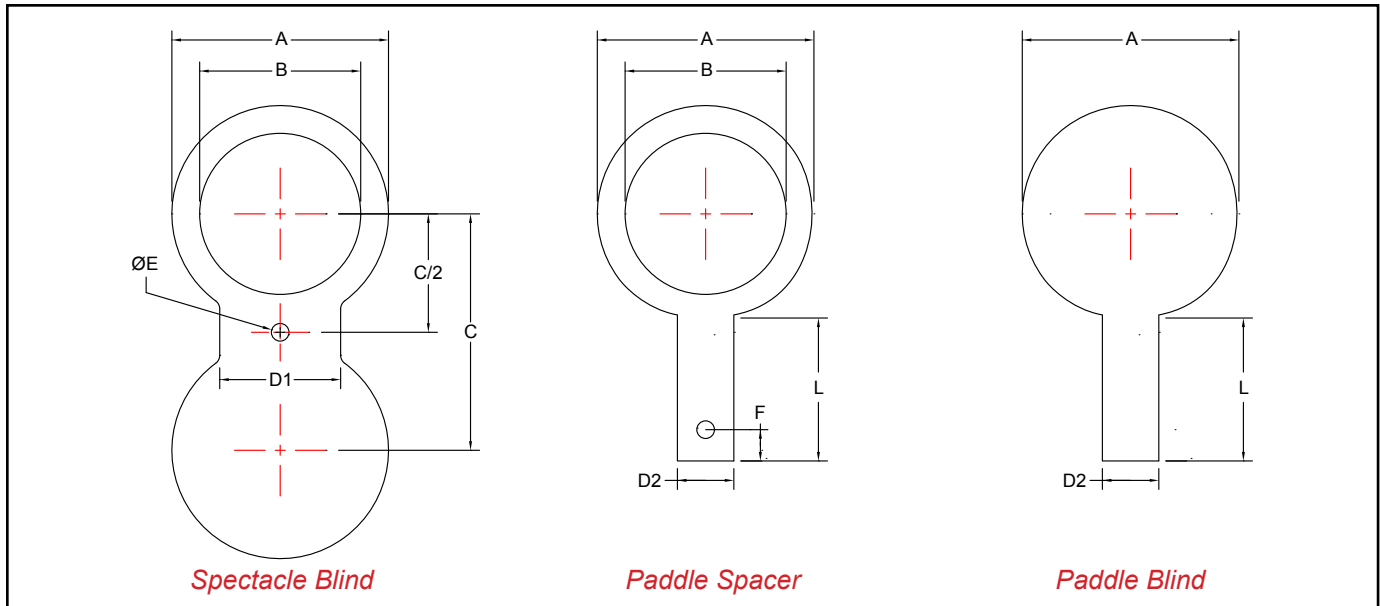
# Line Blinds - Dimensional Data

Spectacle Blind  
SBL150 & SBL150SS

Paddle Spacer  
PS150 & PS150SS

Paddle Blind  
PB150 & PB150SS

**ASME Class 150 - Carbon Steel & ASME Class 150 - Stainless Steel**



**Notes:**

- Higher ASME pressure ratings available
- Larger sizes available

Manufacturer reserves the right to modify dimensions, materials, or design. Consult factory for certification.

Size		Dimensions (Inches)								
Inches	Prefix	A	B	C	D1	D2	Ø E	F	L	Thickness
1	0100	2 1/2	1 1/16	3 1/8	1 1/2	1	5/8	1	4	1/8
1 1/2	0150	3 1/4	1 7/8	3 7/8	1 1/2	1	5/8	1	4	1/4
2	0200	4	2 3/8	4 3/4	2	1	3/4	1	4	1/4
3	0300	5 1/4	3 1/2	6	2 1/2	1	3/4	1	4	1/4
4	0400	6 3/4	4 1/2	7 1/2	2 1/2	1	3/4	1	4	3/8
6	0600	8 5/8	6 5/8	9 1/2	3	1	7/8	1	4	1/2
8	0800	10 7/8	8 5/8	11 3/4	3	1	7/8	1	4	1/2
10	1000	13 1/4	10 3/4	14 1/4	4	1	1	1	5	5/8
12	1200	16	12 3/4	17	4	1 1/2	1	1	5	3/4
14	1400	17 5/8	14	18 3/4	4 1/4	1 1/2	1 1/8	1	5	3/4
16	1600	20 1/8	16	21 1/4	4 1/4	1 1/2	1 1/8	1	5	7/8
18	1800	21 1/2	18	22 3/4	4 1/2	1 1/2	1 1/4	1	5	1
20	2000	23 3/4	20	25	4 3/4	1 1/2	1 1/4	1	5	1 1/8
24	2400	28 1/8	24	29 1/2	5 1/2	1 1/2	1 3/8	1	5	1 1/4

**Ordering Information**

Example: Include full description

Size                      Model  
(Prefix)                Number  
**0200                      SBL150**

2" Spectacle Blind, ASME Class 150, Carbon Steel

**Operating Pressures and Temperatures**

Type	Size	psi @ Temp Steam	psi @ Temp WOG
SBL150 / PS150 / PB150	1" - 24"	150 @ 366 °F	285 @ 100 °F
SBL150SS / PS150SS / PB150SS	1" - 24"	150 @ 366 °F	275 @ 100 °F



**Sure flow  
Equipment Inc.**

Toll Free: 1-800-263-8251 Toll Free Fax: 1-800-876-1164  
International: 1-905-335-1350 International Fax: 1-905-332-4993  
Email: info@sureflowequipment.com www.sureflowequipment.com

