

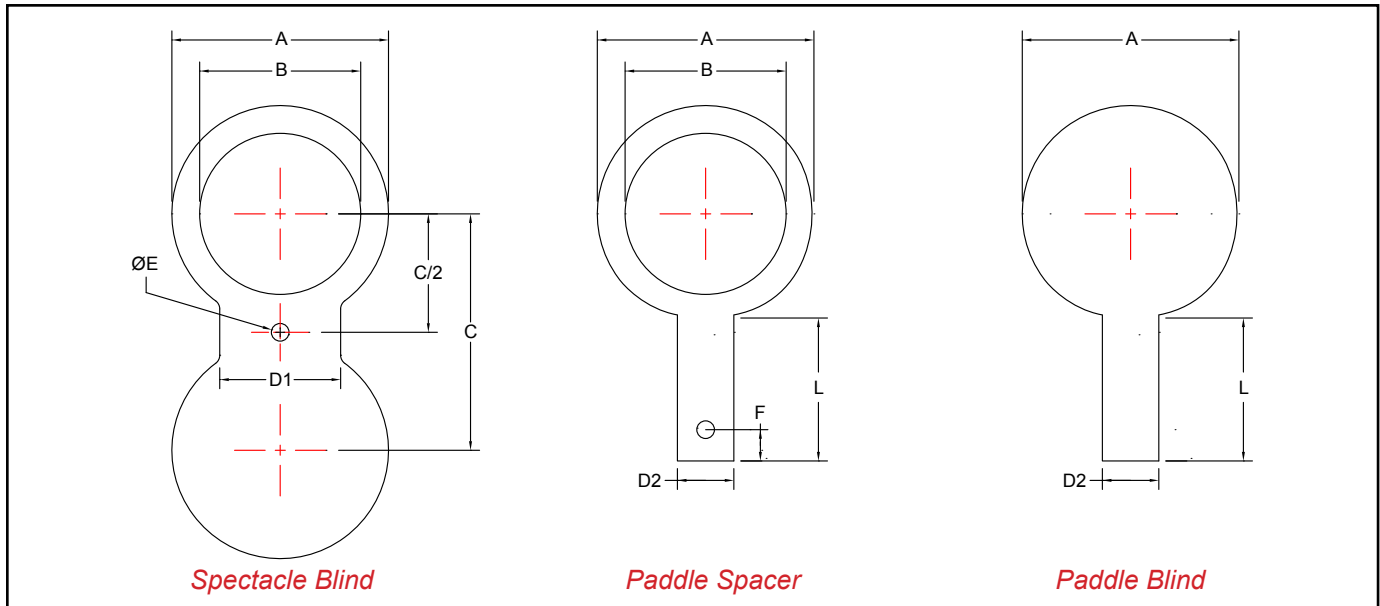
Line Blinds - Dimensional Data

Spectacle Blind
SBL300 & SBL300SS

Paddle Spacer
PS300 & PS300SS

Paddle Blind
PB300 & PB300SS

ASME Class 300 - Carbon Steel & ASME Class 300 - Stainless Steel



Notes:

- Higher ASME pressure ratings available
- Larger sizes available

Manufacturer reserves the right to modify dimensions, materials, or design. Consult factory for certification.

Size		Dimensions (Inches)								
Inches	Prefix	A	B	C	D1	D2	Ø E	F	L	Thickness
1	0100	2 3/4	1 1/16	3 1/2	1 1/2	1	3/4	1	4	1/4
1 1/2	0150	3 5/8	1 7/8	4 1/2	1 1/2	1	3/4	1	4	1/4
2	0200	4 1/4	2 3/8	5	2	1	3/4	1	4	3/8
3	0300	5 3/4	3 1/2	6 5/8	2 1/2	1	7/8	1	4	3/8
4	0400	7	4 1/2	7 7/8	2 1/2	1	7/8	1	4	1/2
6	0600	9 3/4	6 5/8	10 5/8	3	1	7/8	1	4	5/8
8	0800	12	8 5/8	13	3	1	1	1	4	7/8
10	1000	14 1/8	10 3/4	15 1/4	4	1	1 1/8	1	5	1
12	1200	16 1/2	12 3/4	17 3/4	4	1 1/2	1 1/4	1	5	1 1/8
14	1400	19	14	20 1/4	4 1/4	1 1/2	1 1/4	1	5	1 1/4
16	1600	21 1/8	16	22 1/2	4 1/4	1 1/2	1 3/8	1	5	1 1/2
18	1800	23 3/8	18	24 3/4	4 1/2	1 1/2	1 3/8	1	5	1 5/8
20	2000	25 5/8	20	27	4 3/4	1 1/2	1 3/8	1	6	1 3/4
24	2400	30 3/8	24	32	5 1/2	1 1/2	1 5/8	1	6	2

Ordering Information

Example: Include full description

Size Model
(Prefix) Number
1800 PS300SS

18" Paddle Spacer, ASME Class 300, Stainless Steel

Operating Pressures and Temperatures

Type	Size	psi @ Temp Steam	psi @ Temp WOG
SBL300 / PS300 / PB300	1" - 24"	300 @ 422 °F	740 @ 100 °F
SBL300SS / PS300SS / PB300SS	1" - 24"	300 @ 422 °F	720 @ 100 °F



**Sureflow
Equipment Inc.**

Toll Free: 1-800-263-8251 Toll Free Fax: 1-800-876-1164
International: 1-905-335-1350 International Fax: 1-905-332-4993
Email: info@sureflowequipment.com www.sureflowequipment.com

