

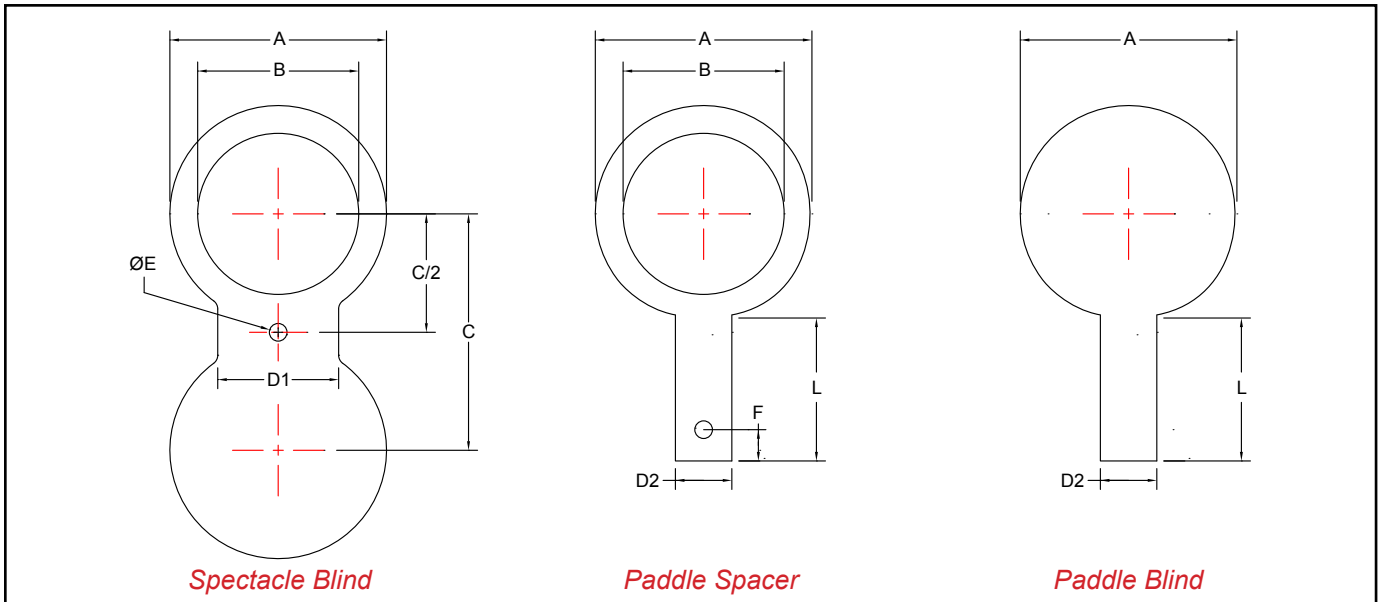
Line Blinds - Dimensional Data

Spectacle Blind
SBL600 & SBL600SS

Paddle Spacer
PS600 & PS600SS

Paddle Blind
PB600 & PB600SS

ASME Class 600 - Carbon Steel & ASME Class 600 - Stainless Steel



Notes:

- Higher ASME pressure ratings available
- Larger sizes available

Manufacturer reserves the right to modify dimensions, materials, or design. Consult factory for certification.

Dimensions (Inches)										
Size		A	B	C	D1	D2	Ø E	F	L	Thickness
Inches	Prefix									
1	0100	2 3/4	1 1/16	3 1/2	2 1/4	1	3/4	1	4	1/4
1 1/2	0150	3 5/8	1 11/16	4 1/2	2 5/8	1	7/8	1	4	3/8
2	0200	4 1/4	2 3/16	5	2 1/4	1	3/4	1	4	3/8
3	0300	5 3/4	3 1/4	6 5/8	2 5/8	1	7/8	1	4	1/2
4	0400	7 1/2	4 1/4	8 1/2	3	1	1	1	4	5/8
6	0600	10 3/8	6 3/8	11 1/2	3 3/8	1	1 1/8	1	5	7/8
8	0800	12 1/2	8 5/16	13 3/4	3 3/4	1	1 1/4	1	5	1 1/8
10	1000	15 5/8	10 7/16	17	4 1/8	1	1 3/8	1	5	1 3/8
12	1200	17 7/8	12 3/8	19 1/4	4 1/8	1 1/2	1 3/8	1	5	1 5/8
14	1400	19 1/4	13 5/8	20 3/4	4 1/2	1 1/2	1 1/2	1	5	1 3/4
16	1600	22 1/8	15 5/8	23 3/4	4 7/8	1 1/2	1 5/8	1	6	2
18	1800	24	17 5/8	25 3/4	5 1/4	1 1/2	1 3/4	1	6	2 1/8
20	2000	26 3/4	19 9/16	28 1/2	5 1/4	1 1/2	1 3/4	1	6	2 1/2
24	2400	31	23 1/2	33	6	1 1/2	2	1	6	2 7/8

Ordering Information

Example: Include full description

Size Model
(Prefix) Number
1200 **PB600**

12" Paddle Blind, ASME Class 600, Carbon Steel

Operating Pressures and Temperatures

Type	Size	psi @ Temp Steam	psi @ Temp WOG
SBL600 / PS600 / PB600	1" - 24"	600 @ 489 °F	1480 @ 100 °F
SBL600SS / PS600SS / PB600SS	1" - 24"	600 @ 489 °F	1440 @ 100 °F



Sure flow
Equipment Inc.

Toll Free: 1-800-263-8251 Toll Free Fax: 1-800-876-1164
International: 1-905-335-1350 International Fax: 1-905-332-4993
Email: info@sureflowequipment.com www.sureflowequipment.com

