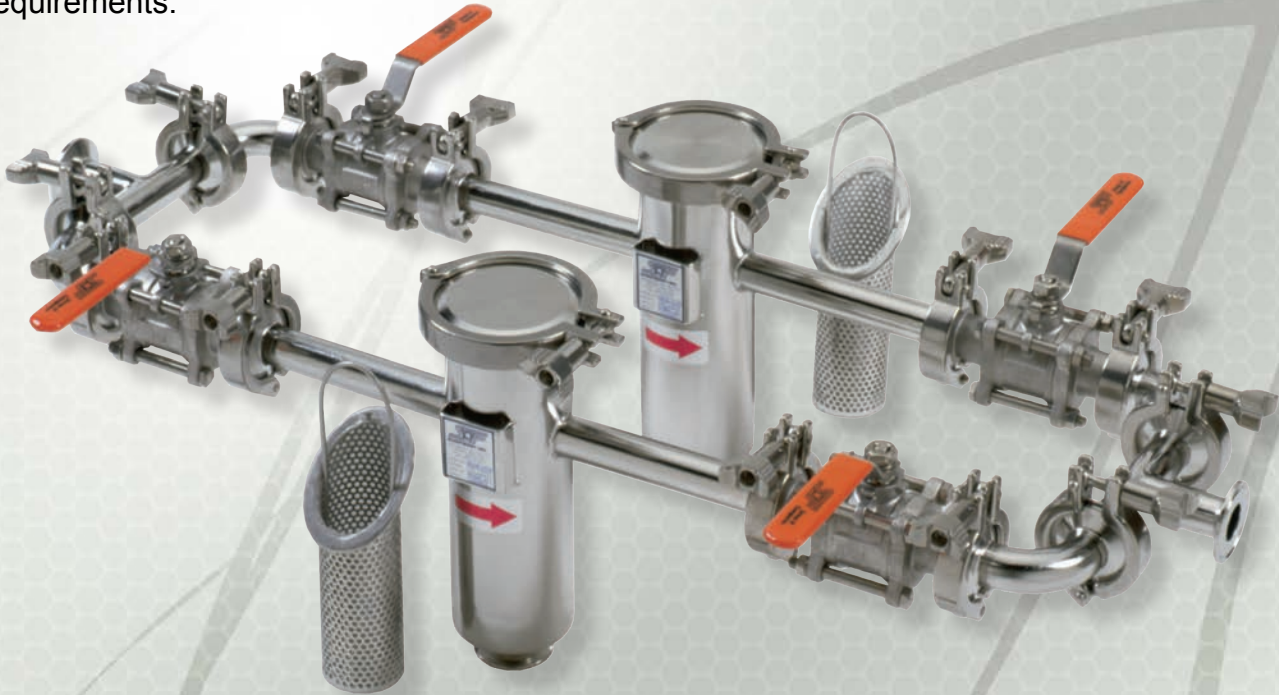


Fabricated Sanitary Duplex Strainers

Model - DB150SSTRI

The Sure Flow Equipment Try Clamp Duplex Strainer performs the same function as an industrial Duplex Strainer. The configuration can be changed to meet the specific application requirements.



Dimensions (Inches)			
Size		A	B
Inches	Prefix		
1/2	0050	24	6
3/4	0075	25	6
1	0100	27	6
1 1/2	0150	29	6
2	0200	32	6
2 1/2	0250	34	6
3	0300	38	11

Larger sizes available.

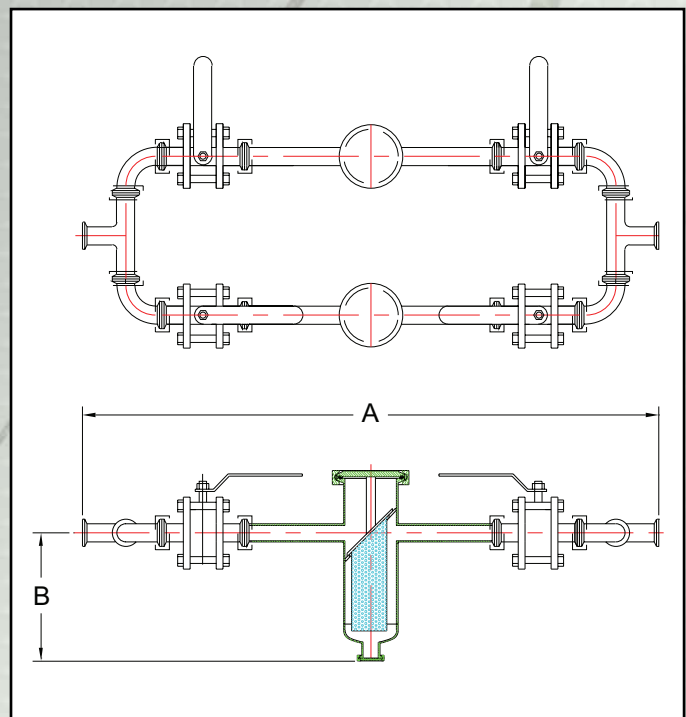
Manufacturer reserves the right to modify dimensions, materials, or design. Contact factory for certification.

Ordering Information

Example: Include full description

Size (Prefix)	Model Number	Screen Opening
0250	DB150SSTRI	125

Dual Basket Strainer, Stainless Steel,
2 1/2" Sanitary Try Clamp with 1/8" Perf Screen.



Sure flow
Equipment Inc.

Toll Free: 1-800-263-8251 Toll Free Fax: 1-800-876-1164
International: 1-905-335-1350 International Fax: 1-905-332-4993
Email: info@sureflowequipment.com www.sureflowequipment.com